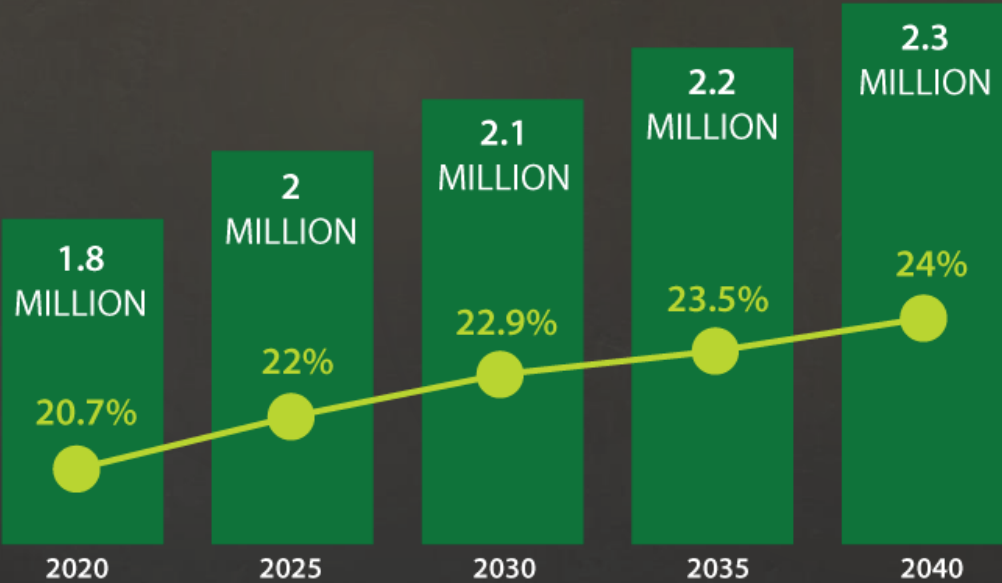


**HB 2017
Funding for
Transportation
Serving Older
Adults and
People with
Disabilities**



Transportation options are needed for people of all ages and abilities.

- 12% of the population of the region identify as living with a disability that significantly impacts major life activities. 35% of these people have incomes below 150% of the Federal Poverty Level.

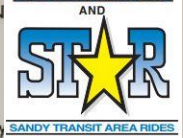
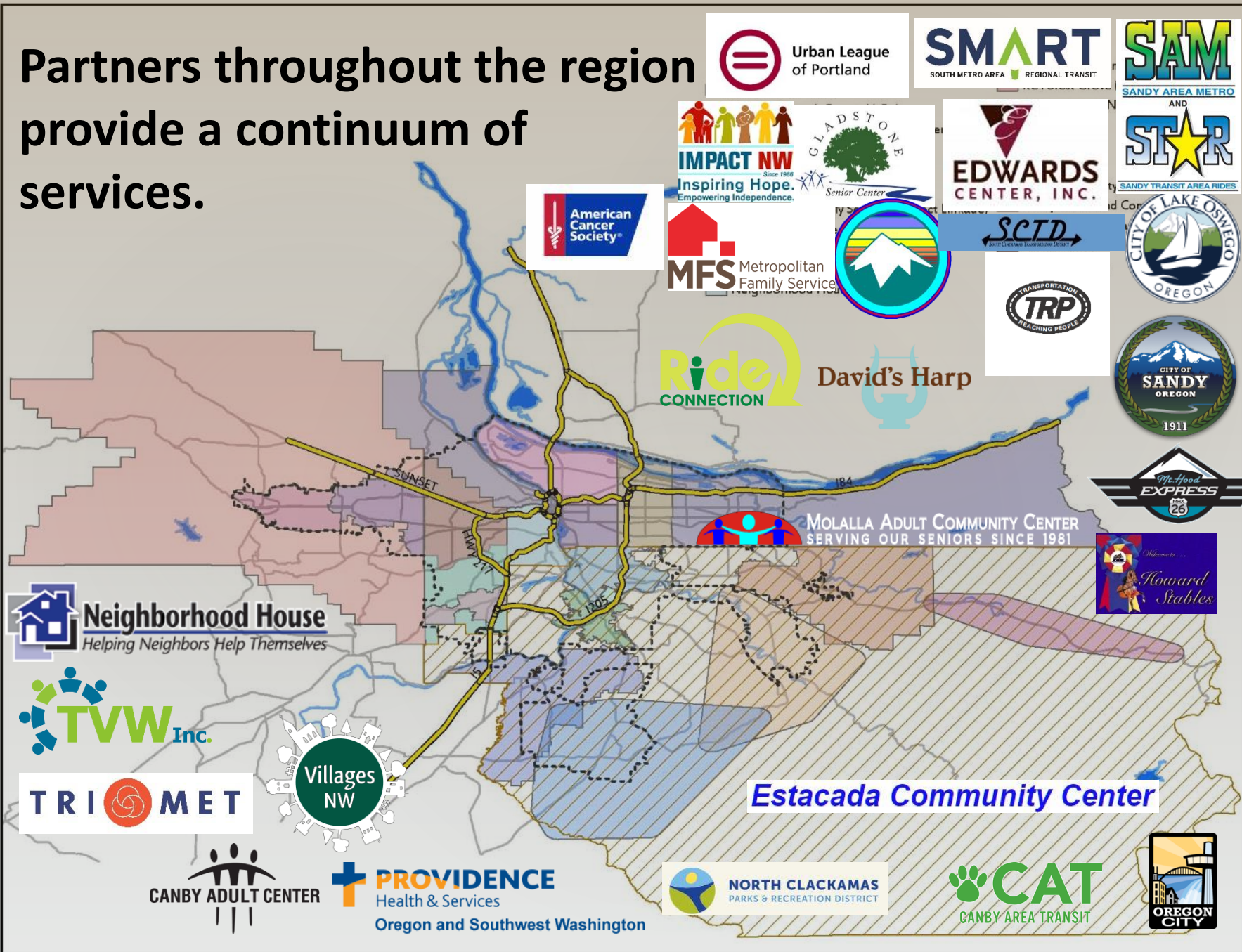


■ Total Population of Portland Tri-County Area
— Percentage of Population Aged 60 and Older

Source:
Population Research Center
Portland State University



Partners throughout the region provide a continuum of services.



David's Harp



MOLALLA ADULT COMMUNITY CENTER
SERVING OUR SENIORS SINCE 1981



Estacada Community Center



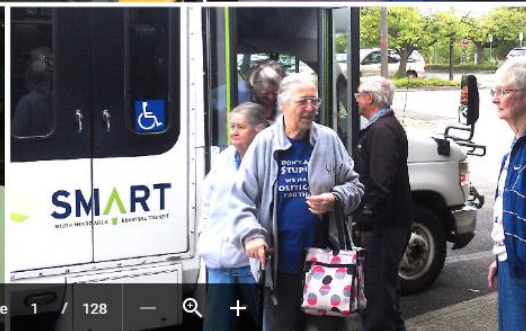
The Region has a Service Enhancement Plan for Older Adults and People with a Disabilities.

Tri-County Metropolitan Transportation District of Oregon (TriMet)
COORDINATED TRANSPORTATION PLAN FOR SENIORS & PERSONS WITH DISABILITIES

June 2016

Prepared for:
TriMet
1800 SW First Ave., Suite 300
Portland, OR 97201
503.962.2202

Prepared by:
Kittelson & Associates, Inc.
610 SW Alder St, Suite 700
Portland, OR 97205
503.228.5230
www.kittelson.com



What benefits will there be for Older Adults, People with Disabilities and the regional transportation system?

\$5M in Dedicated Funding will provide:

- Increased Service for people of all ages and abilities
- Capital Improvements – More Accessibility in the Built Environment and Technology
- Equitable Access to New Mobility Services
- Services that allow people to transition between modes as their abilities change

