

# A BETTER RED



# Gateway Green Trail Map



Easy  
Principiante  
Tập Sự



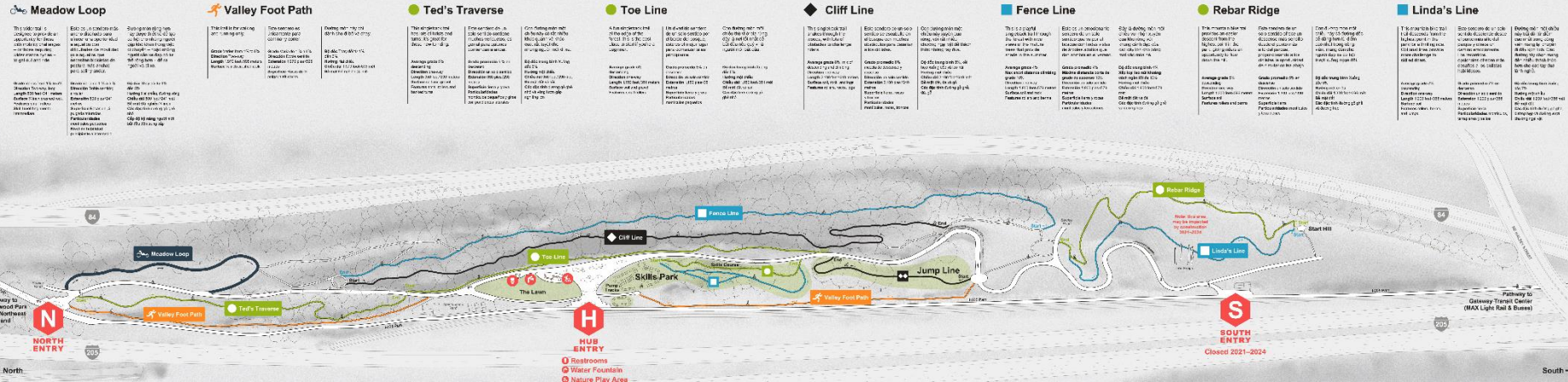
More difficult  
Intermedio  
Trung Cấp



Very difficult  
Avanzado  
Nâng Cao



Extremely difficult  
Experto  
Chuyên Gia



## Linda's Line Rebar Ridge



YouTube links:

English: <https://youtu.be/0udaEI7x9Y0>

En Español: [https://youtu.be/0mlb\\_xuY\\_dI](https://youtu.be/0mlb_xuY_dI)

# Project Benefits

- Extends MAX Red Line west to serve 10 more stations
- Improves reliability for the entire MAX system
- Adds new multi-use paths at Gateway and PDX
- Creates up to 1,200 jobs
- Includes ambitious goals for Disadvantaged Business Enterprise (DBE) contracting
- Leverages about \$100 m federal funding



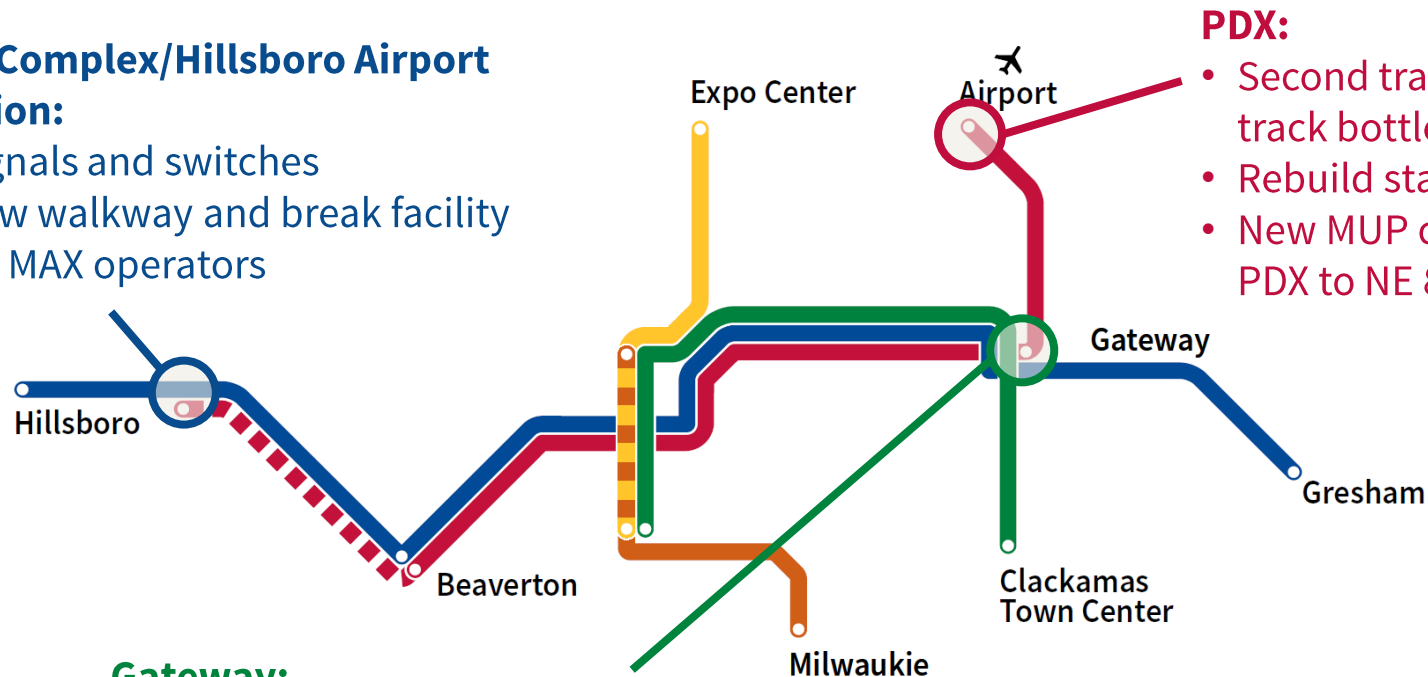
# ESTIMATED PROJECT SCHEDULE



# Construction Areas

## Fair Complex/Hillsboro Airport Station:

- Signals and switches
- New walkway and break facility for MAX operators



## PDX:

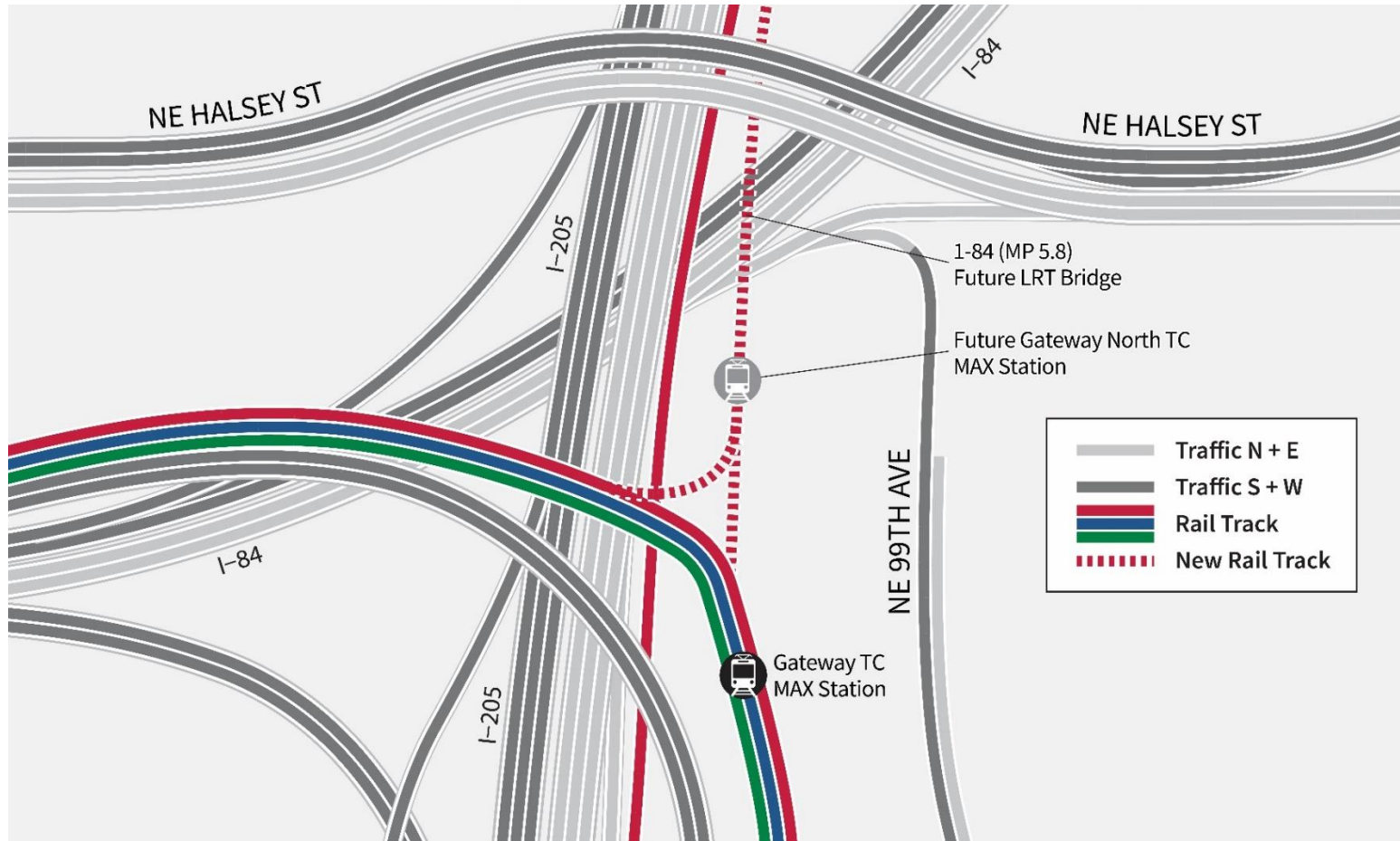
- Second track at single-track bottleneck
- Rebuild station platform
- New MUP connecting PDX to NE 82nd Way

## Gateway:

- Second track at single-track bottleneck
- Two bridges:
  - Over existing MAX track and I-205 MUP
  - Over I-84 and UPRR tracks, with new MUP to Gateway Green Park
- New station platform for Red Line trains heading toward City Center

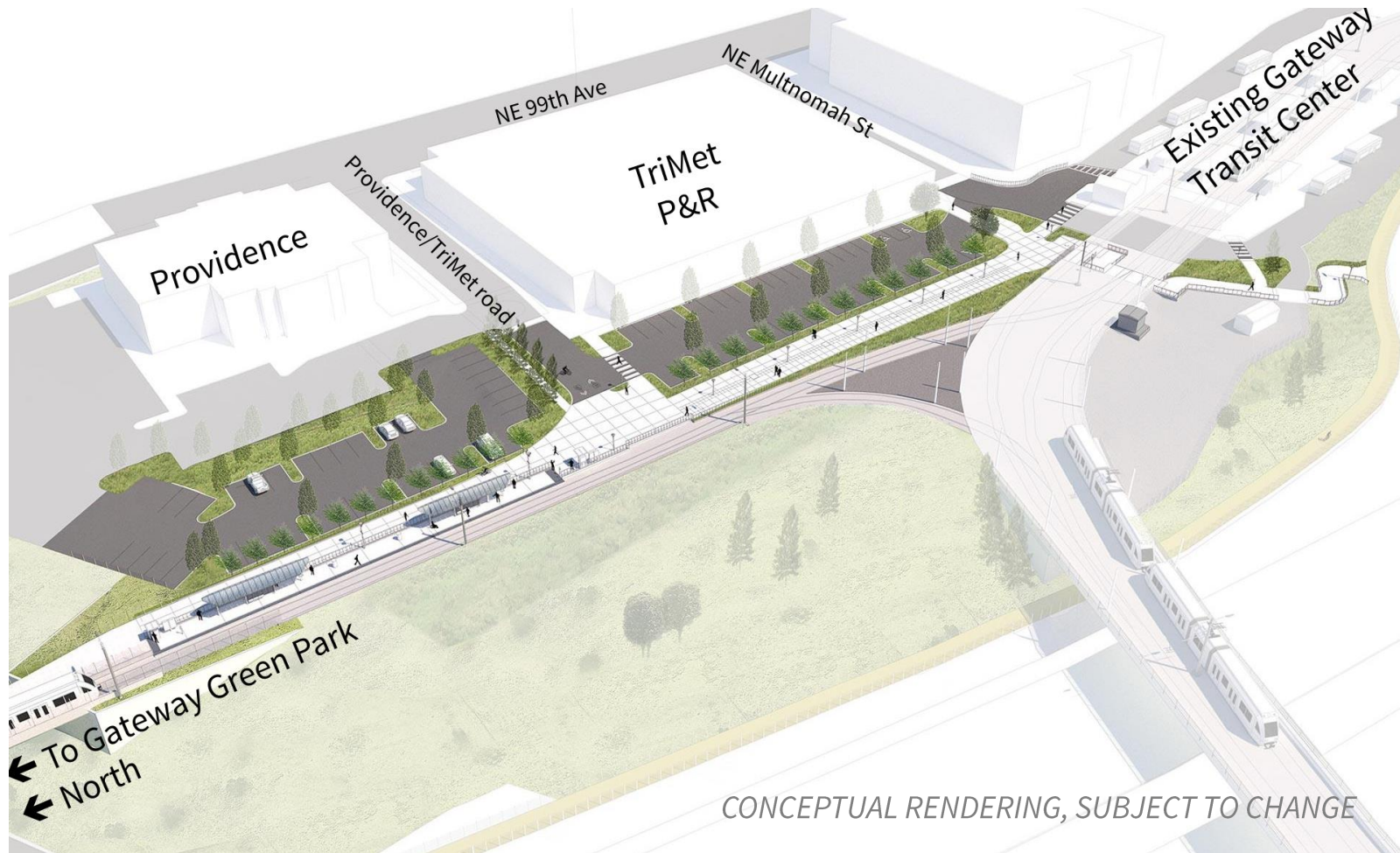
# Gateway Area

Diagram of new light rail second track



# Gateway Area

Aerial view of new Red Line (in-bound only) station, the existing Gateway station and the path connecting the two





# Gateway Area

Aerial view of the new inbound light rail station, multi-use path, and Providence parking lot.



CONCEPTUAL RENDERING, SUBJECT TO CHANGE

# Gateway Area

New light rail and multiuse path overpass over I-84



*CONCEPTUAL RENDERING, SUBJECT TO CHANGE*

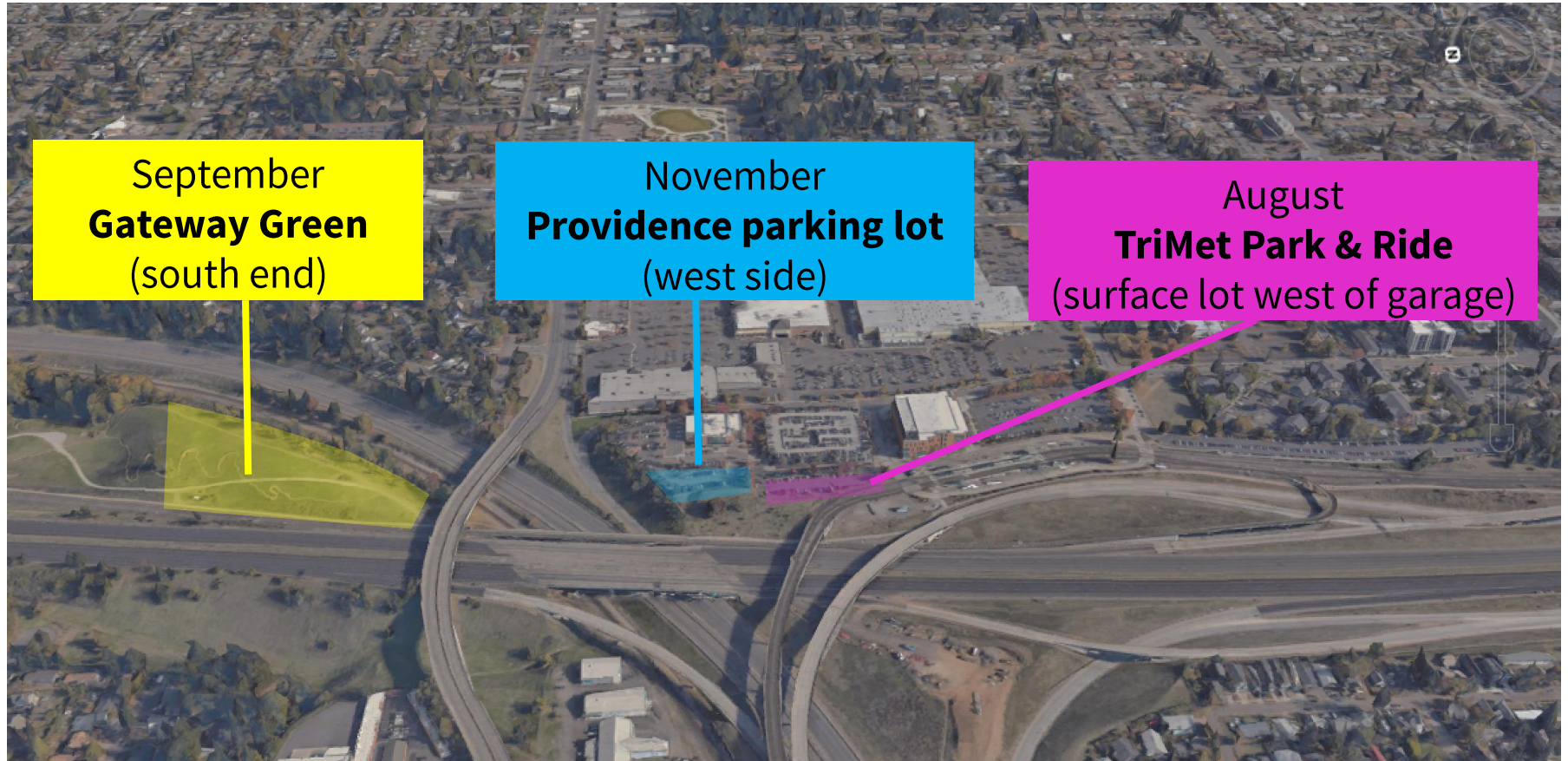
# Gateway Area

Aerial view looking south toward the multi-use path and Gateway Green light rail overcrossing



# Construction Closures

Starting summer 2021 through 2024



# Gateway Green – Three Phases

## Phase 1 – opened 2017

- ‘Dirtlab,’ new trails, jump line, skills area

## Phase 2 – opened 2020

- Pump track, hub gathering area and expanded trails
- Gravity lines on the south end of the park: temporary, to be replaced after TriMet Better Red construction (Linda’s Line; Rebar Ridge)

## Phase 3 – opening 2024

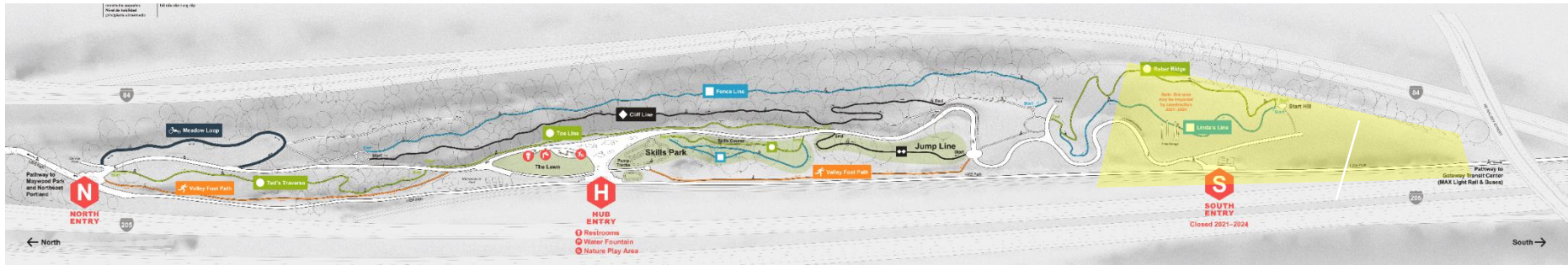
- New pedestrian and bike bridge connection to Gateway Transit Center
- Regraded for longer run and more vertical drop

# Gateway Area

Plan view of future Gateway Green trails



# Gateway Green Construction Closure



# 2024

## *TriMet will:*

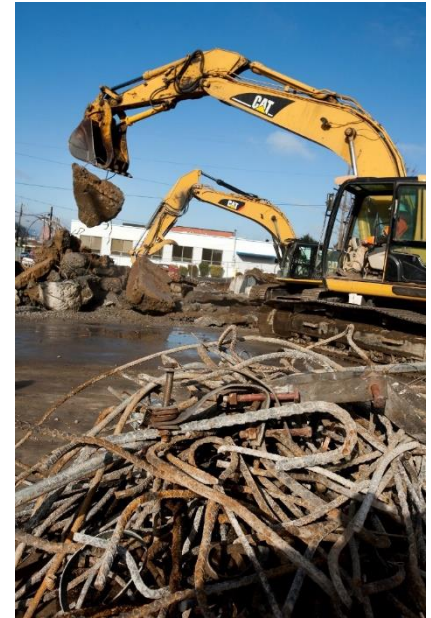
- Open new bridge over I-84, with **new multi-use path** access for bicycles, pedestrians, and emergency vehicles
- **Extend gravel “spine road”** south to the hilltop and new bridge
- **Regrade slope** to provide approximately 80 yards of increased run and at least 10 feet more vertical drop
- Replace approximately 15 trees that must be removed for construction with more than **80 new trees**

*Portland Parks and partners will construct Linda’s Line and Rebar Ridge.*



# TriMet's Construction Ethic

- Safety
- Minimize impacts to neighbors while maximizing construction efficiencies
- Community Affairs staff – liaison for neighbors
  - Gather information about access, operational needs
  - Collaborate with contractor to plan and adjust construction activities
  - Frequent communications; what to expect in advance; on-call 24/7



# What Else to Expect During construction

- MAX service interruptions, with shuttle buses (6)
- Lane closures, including nights on I-84
- Occasional closure of I-84 eastbound Exit 7–Halsey
- Weekend closures of I-84 (2)
- Night closures of westbound I-84 (1-3 weeks)
- Daytime pile driving adjacent to I-84
- Night and weekend construction
- Multi-use path impacts

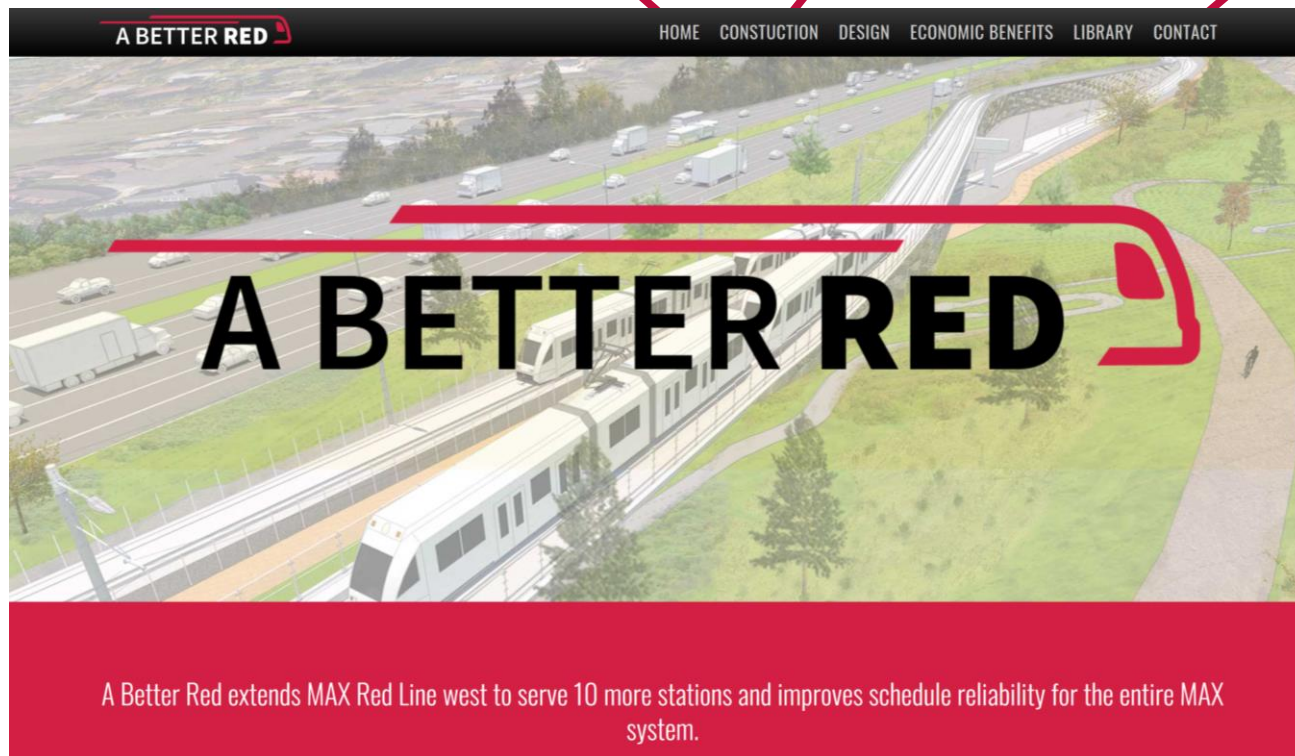


# trimet.org/betterred

**HOME:**  
Video with  
Gateway flyover

**CONSTRUCTION:**  
Weekly updates

**CONTACT:**  
Sign up for email  
updates



# Comments & Questions?

[trimet.org/BetterRed](https://trimet.org/BetterRed)

Email: [BetterRed@trimet.org](mailto:BetterRed@trimet.org)

Phone: 503.962.2150

Libby Winter

Email: [WinterLi@trimet.org](mailto:WinterLi@trimet.org)

Cell: 503.983.3930